



# Fact Sheet



## Uncovering the Future In Energy Transition Metals

#514 – 55 Water Street,  
Vancouver, BC V6B 1A1

info@strategxcorp.com  
www.strategxcorp.com

## Investment Highlights

- + Targeting **underexplored regions** in northern Canada having world-class deposit discovery potential
- + **5-stand alone projects** (100% owned) that hosts multiple energy transition metals such as cobalt, nickel, copper, vanadium and PGEs
- + Project pipeline has many excellent targets that are almost **drill-ready**
- + **Discovery-driven team** with proven track record of success and experience in northern Canada
- + Well-established relationship with the **Lutselk'e Dene First Nations**
- + Tight capital structure with **significant** market capitalization upside potential
- + Share price has outperformed several market indexes since becoming public

## About Us

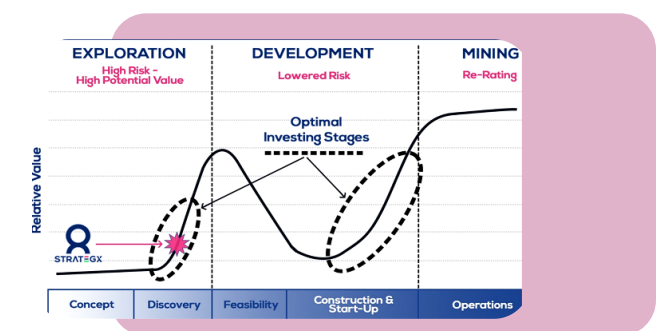
StrategX is a Canadian-based exploration company focused on discovering energy transition metals in northern Canada. The Company has a property portfolio of 5 stand-alone projects situated on the East Arm of the Great Slave Lake, Northwest Territories and the Melville Peninsula, Nunavut. This first-mover advantage in underexplored

regions presents a unique opportunity for investors to be part of multiple discoveries and the development of new districts for metals essential for the transition to green energy. StrategX's mission is to make a significant contribution to the sustainable energy economy through its exploration activities.

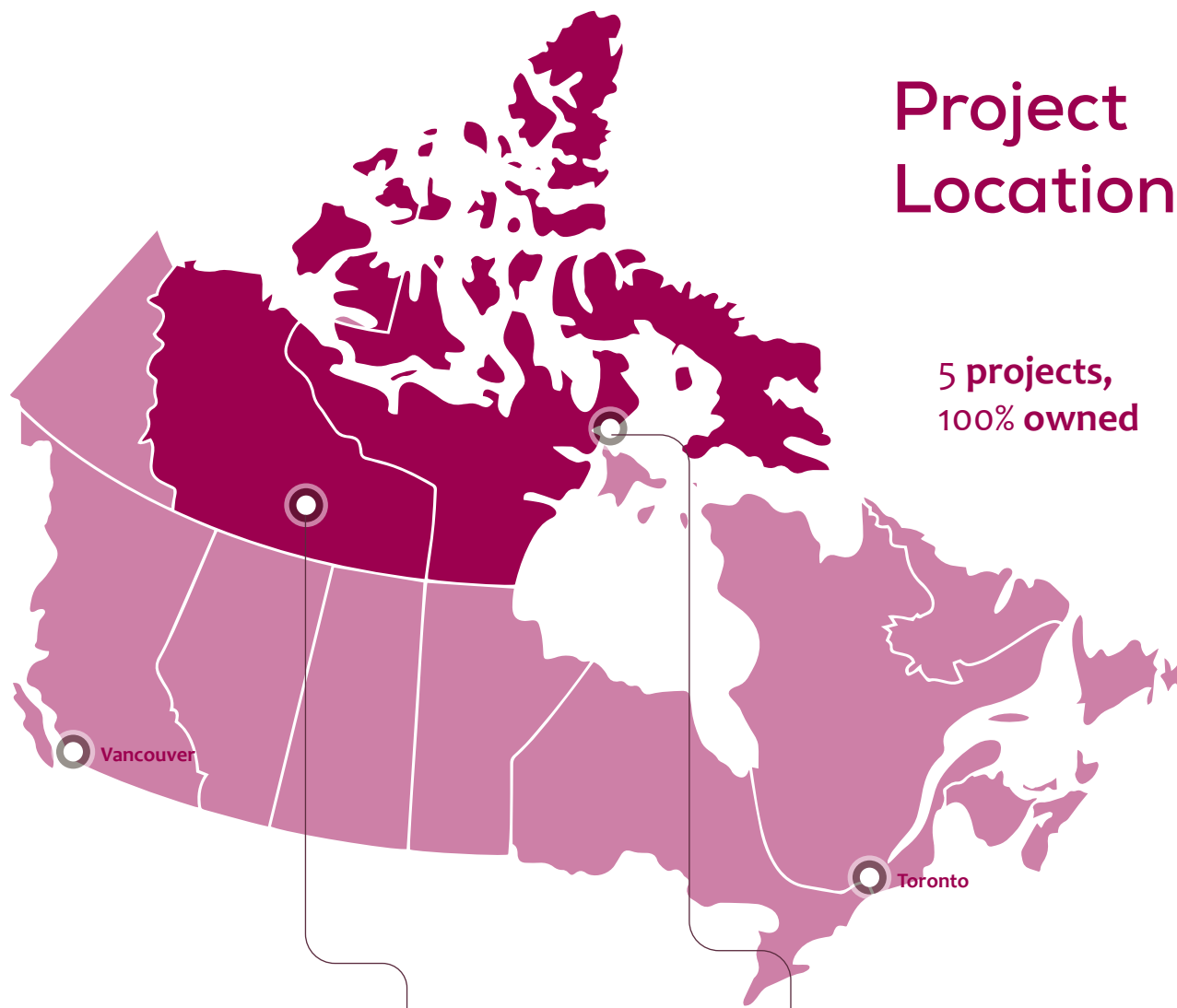
## Catalysts

- + 2,000-meter drill program at Project Nagvaak in Nunavut to discover world-class deposit potential in various energy transition metals
- + Creating additional opportunities by advancing East Arm targets
- + Drill results from Projects Nagvaak, 939 and EA South

- + Identify Target Impact Investors who will be part of the company's valuation growth
- + Establish an exploration base in Lutselk'e
- + Secure funding for further exploration activities
- + Establish community engagement initiatives through consultation



Lifecycle of a Junior mining Company



# Project Location

5 projects, 100% owned

**East Arm, Northwest Territories** 110k hectares

- Project 939
- Project EA South

**New Cobalt Discovery**

**Large copper-gold-cobalt target**

**Melville Peninsula, Nunavut** 60k hectares

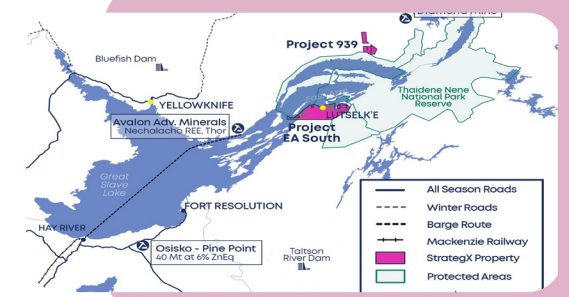
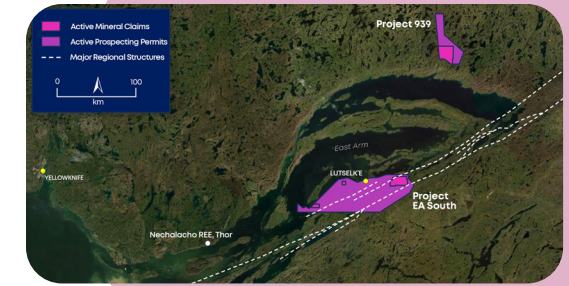
- Project Mel
- Project Nagvaak
- Project Tasijuaq

**regional sedimentary basin hosting energy transition metals**

**magmatic nickel-copper-cobalt discovery**

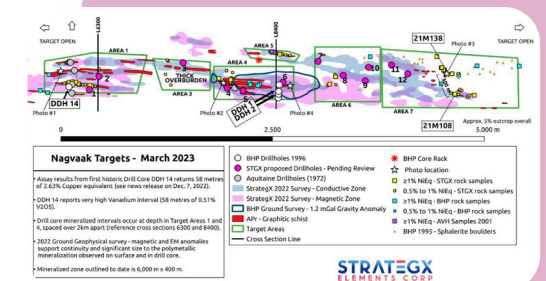
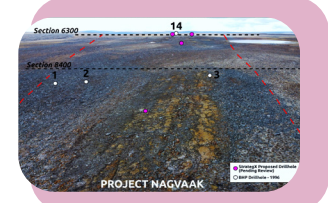
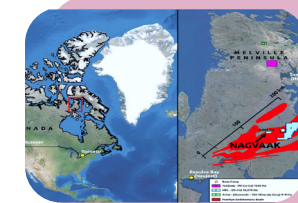
# East Arm Overview

- + Staked 13k hectares covering highest cobalt anomalies
- + Defining discovery drill targets on Project 939
- + Project EA South hosts regional scale mineralized belt in copper, gold and cobalt targets
- + 94k hectares in permits for future staking
- + Exploration base in Lutselk'e

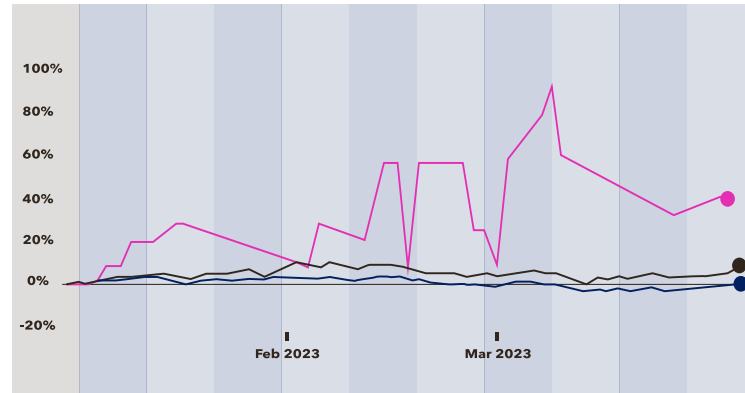


# Melville Overview

- + 100% ownership of three properties – Mel, Nagvaak and Tasijuaq (60,300 ha)
- + Proterozoic sedimentary basin hosting major targets in energy transition metals
- + Mafic intrusive Ni-Cu-Co-PGE system hosted by what is called the Archean Tasijuaq gabbro
- + Drill ready targets to make major discovery



# Share Performance



Source: Google Finance

**\$0.35** ↑ 40.00%

March 31, 2023 · CAD  
YTD 2023 share performance

**StrategX Elements Corp** ↑ 40.00%  
STEX

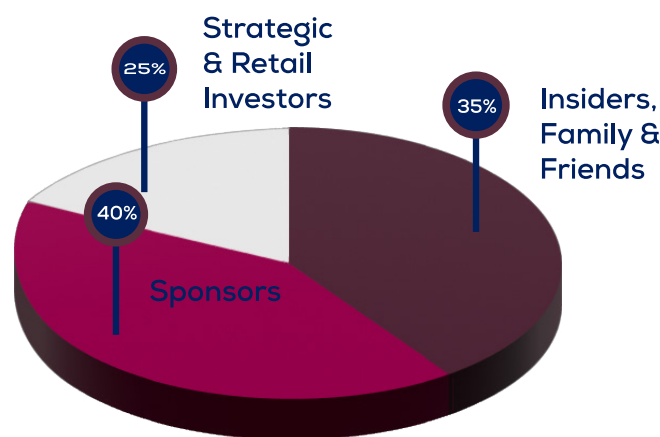
## Comparisons

**GDXJ** ↑ 0.42%

**S&P 500** ↑ 7.46%

# Capital Structure

(As of December 2022)



Capital Structure	Value (M)
Basic Shares Outstanding	32.65
# of options	2.1
# of warrants	6.98
Fully Diluted Shares Outstanding	41.73
Share Price (March 31, 2023)	\$0.35
Current Market Cap	\$11.43

# Board of Directors



## Darren Bahrey

CEO & President, Founder  
BSc., CSC

Darren began his career as a geologist working for Placer Dome from 1989 until 2004 and has since been involved forming public companies serving as Founder, CEO, President, and Chairman. Darren is an entrepreneur, explorer, and passionate about building companies and teams creating exceptional results and value growth for all involved including shareholders, stakeholders and local communities. He has been involved in numerous major discoveries throughout his career and has played a lead role transitioning from exploration discovery into resource definition, feasibility development and mining stages.



## Paula Caldwell St-Onge

Independent Director  
BScH, MBA, ICD.D

Ms. Caldwell had a 30-year career in the Canadian public Office, Environment Canada and Global Affairs Cservice in various departments such as the Privy Council Canada. An experienced and multi-lingual ambassador, Paula brings a wealth of knowledge, expertise and network in International relations, Risk management, Governance issues, International trade, Environmental Stewardship, Sustainable development, Community and Stakeholder engagement. She was a Director on Teranga Gold Corp.'s Board (acquired by Endeavour Mining).



## Ryan McEachern

Independent Director  
BSc., MBA, PGeo

Ryan has 25 years in the mining industry starting out as a geologist on projects in the far North and internationally. He also has experience in capital markets, global supply chains and manufacturing. He now serves as the Managing Director of the Mining Suppliers Trade Association Canada. Ryan brings expertise in government relations, advanced clean technologies, innovation, and advocacy. He is actively engaged in the Critical Minerals ecosystem and net zero economy.

# Team Leadership

## Andrea Yuan

Chief Financial Officer  
CPA, CGA, CPA(NH)

Andrea directs the company's overall financial planning, and risk management and ensures market compliance



## Adam Vary

Chief Technical

As lead project generator, Adam's focus is to grow the company's robust project pipeline.



## Gary Wong

VP Exploration  
P.Eng.

Gary oversees exploration programs, technical innovation, and the development of our technical teams.



## Gabriel Nunez

Project Geologist  
BSc.

Gabriel is our field project geologist focused on making discoveries.



## Fred Marlowe

Field Operations  
& Logistics

Fred, based out of Lutselk'e, assists in advancing our projects in the NWT – a very experienced field guide and liaison to Dene First Nations.



## Ariel Cobangbang

IR & Marketing  
Communications  
CME

Ariel manages investor relations and drives the company's overall integrated marketing & communication initiatives.



## Denise Lockett

Advisor –  
Permitting

Denise represents us on land use, permitting and First Nations/Inuit engagements.



## Cherry Bahrey

Office Manager &  
Marketing Support

Cherry manages our administrative needs and collaborates with our marketing communications team.

